

gigant 
the driving force

19.5 Disc

- 8 Stud 275 pcd
- Compact Bearing
- Wabco Calliper
- ABS/EBS Sensor Standard



Contact us for pricing and enquiries

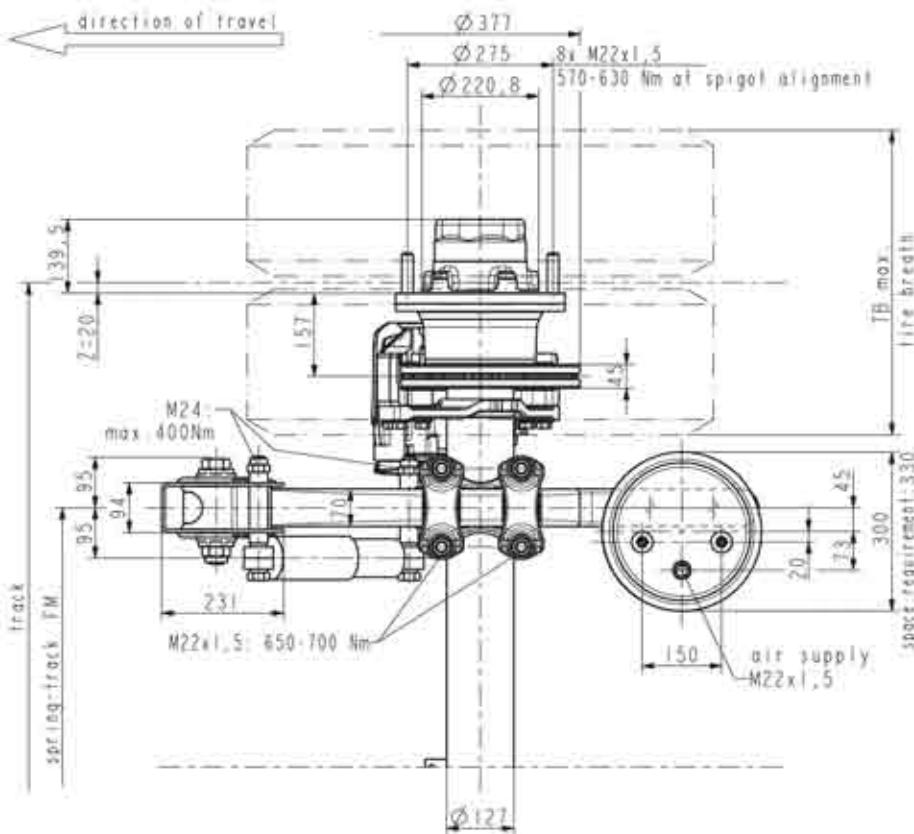
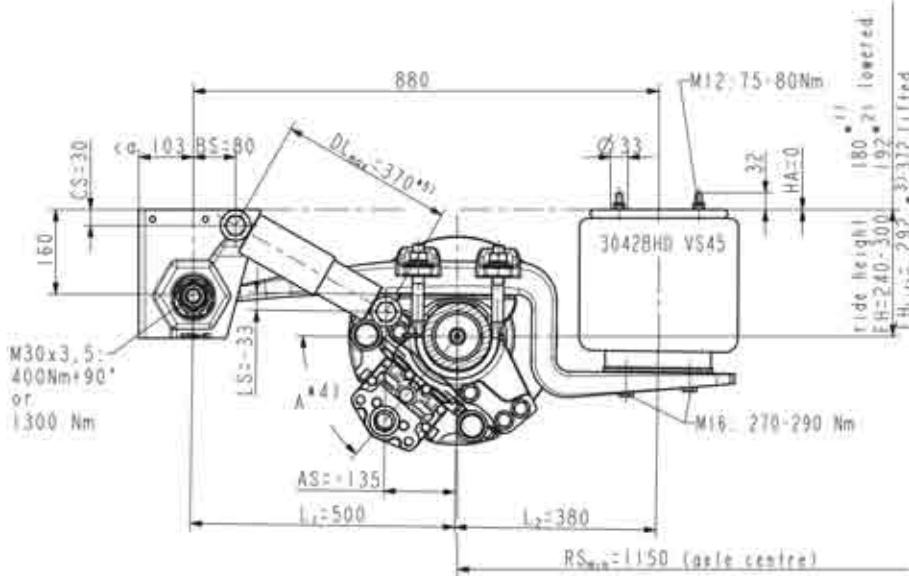


NZH

TRANSPORT
HYDRAULIC
SOLUTIONS

0800-22-55-69

www.nzh.co.nz



axle load:

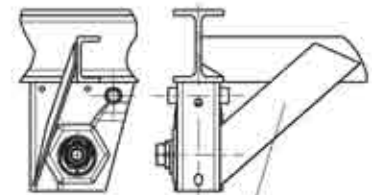
max. 9000 kg at 105 km/h

(depend on spring-track and centre of gravity height)

lift in total: 180 mm at FH_{akt}*21

- * 11 laden, without air
- * 21 unladen, without air
- * 31 FH_{akt}=292 mm
minimum acceptable height with axle lift (theoretical distance Tire-Road = 100mm)
- * 41 Twinlift No. only for A=50°: 00631198
- * 51 Just for raising and lowering (RS) locking valve to be adjusted, that air supply is stopped at DL_{max}=370mm.

Recommendation side support
Details see Installation Instructions



not part of normal delivery

reinforced components for heavy duty model:
axle tube (16mm)
spring reinforced
bellow with piston base (VS45)

Use only with brake cylinders which are sealed inside and approved by the brake-manufacturer.

Test report:
36110603 (3745 WABCO)

No.	track	A	FM	order no.		weight kg (±2%)	TB max.	recommendation for twin mount
				ABS				
1	1830	50°	980	8 100 T 006	8 100 T 007	436	580	265/70 R19,5 *
2								
3								
4								
5								
6								
7								
8								
9								

OBSERVE INSTALLATION INSTRUCTIONS !!!

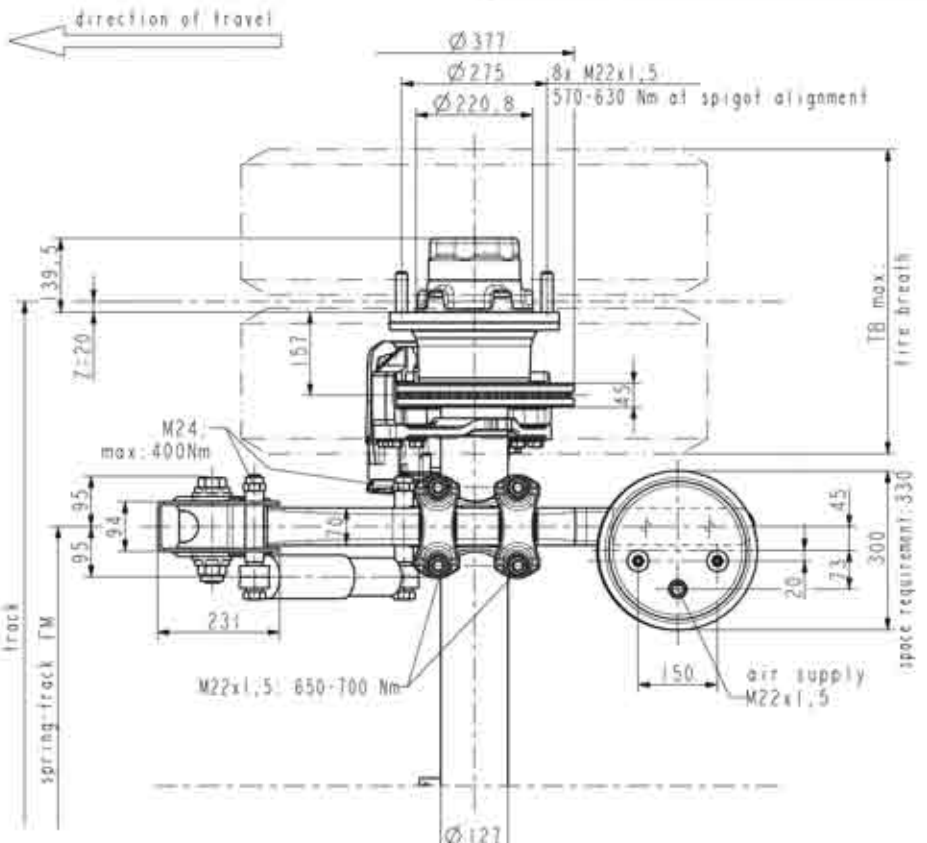
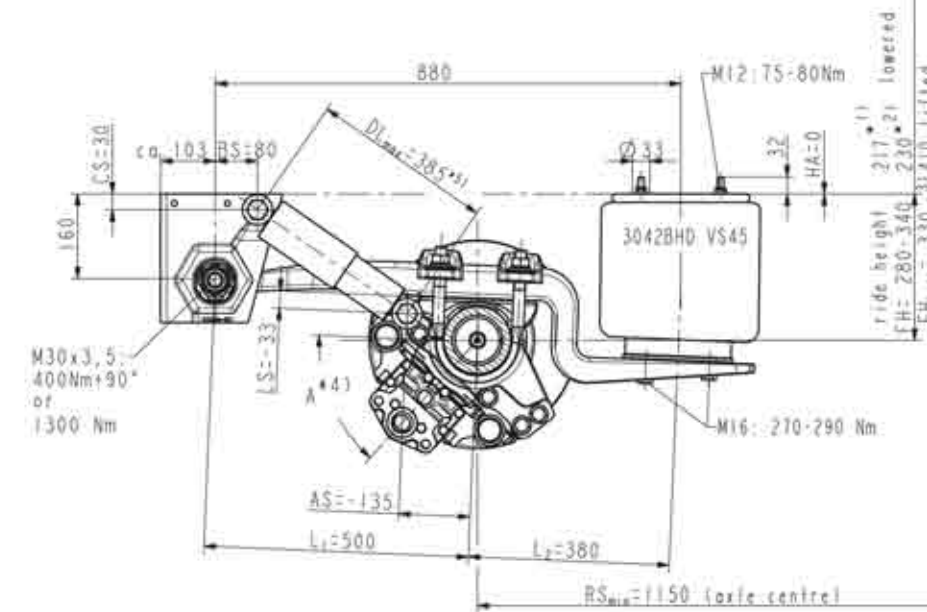


TRENKAMP & GEHLE GmbH
D-49413 Dinkelage

Draw.-no.: 73.015-4

Index
2

DKH2 100 NKLRT FB70 280 HD VS45 ride height FH: 280-340 mm

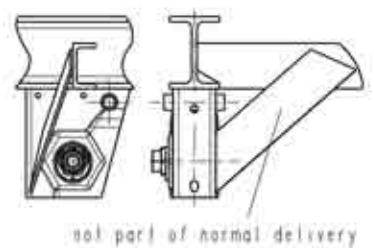


axle load:
max. 9000 kg at 105 km/h
 (depend on spring track and centre of gravity height):

lift in total: 180 mm at FH_{OL} (3)

- * 1) laden, without air
- * 2) unladen, without air
- * 3) FH_{LIFT} = 330 mm
 minimum acceptable height with axle lift
 (theoretical distance Tire-Road = 100mm)
- * 4) Twinlift No. only for A=50°: 00631208
- * 5) Just for raising and lowering (HS) locking valve to be adjusted that air supply is stopped at DL_{max} = 385mm.

Recommendation side support
 Details see Installation Instructions



reinforced components for heavy duty model:
 axle tube (16mm)
 spring reinforced
 bellows with piston base (VS45)

Use only with brake cylinders which are sealed inside and approved by the brake-manufacturer.

Test report:
 36110603 (3745 WABCO)

No.	track	A	FM	order no.		weight kg (±2%)	TB max	recommendation for twin mount
				ABS				
1	1830	50°	980	8 100 7 002	8 100 7 003	436	580	265/70 R19,5 *
2								
3								
4								
5								
6								
7								
8								
9								

OBSERVE INSTALLATION INSTRUCTIONS !!!



Draw.-no.: 73.016-4 Index 2

Call Free 0800 22 55 69

