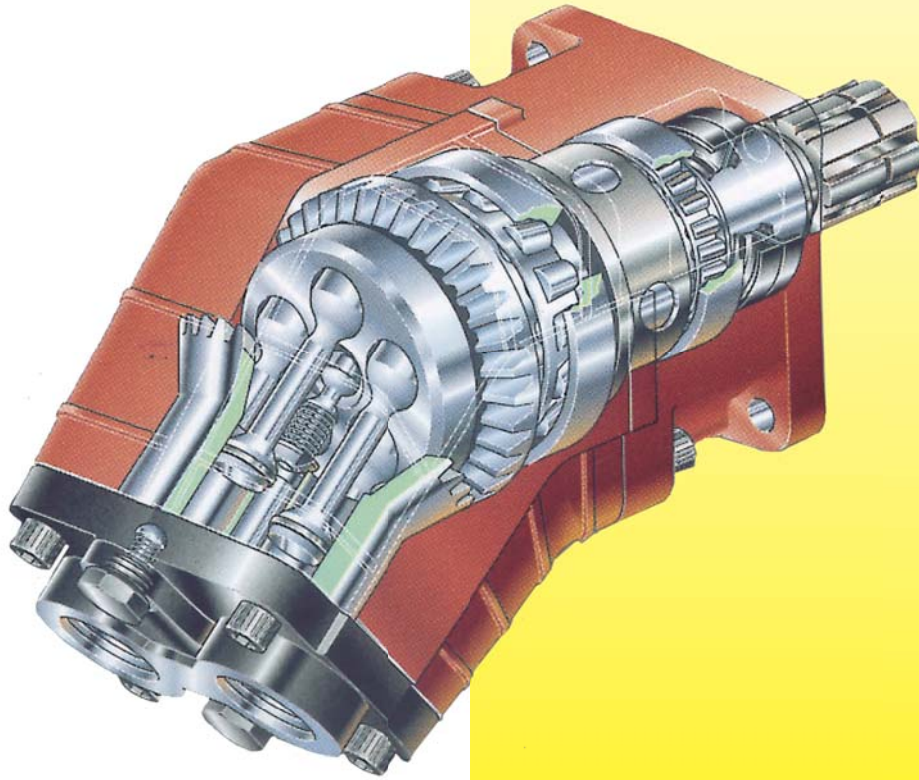


**NZH**

**TRANSPORT  
HYDRAULIC  
SOLUTIONS**



**HYDROCAR**

PAI BENT AXIS PUMP

Call NZH on 0800 22 55 69

[www.nzh.co.nz](http://www.nzh.co.nz)

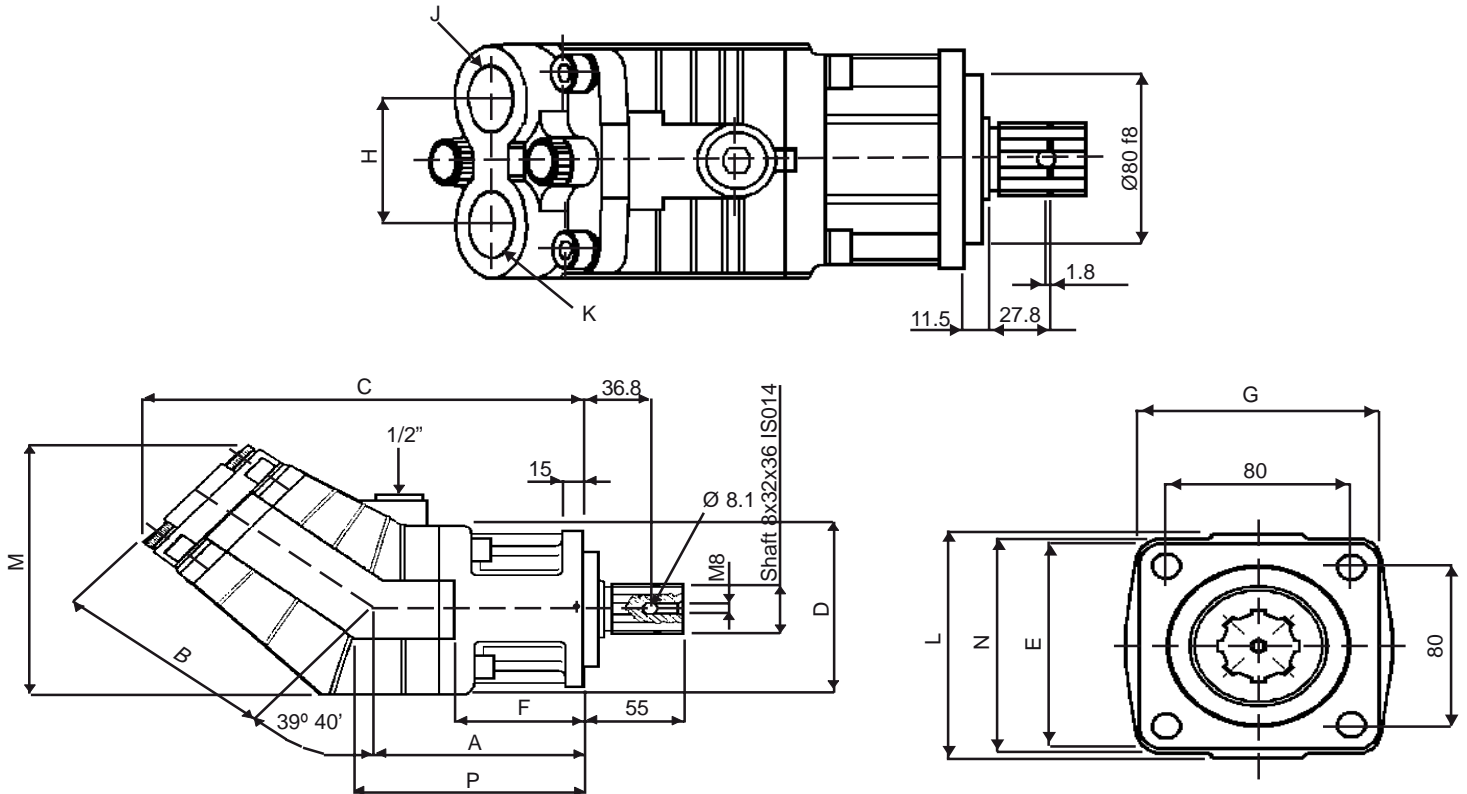
# PAI BENT AXIS PUMP

## Standard Features:

- ✓ High pressure.
- ✓ Lightweight construction.
- ✓ European mounting.

## Options:

- ✓ Left or right hand rotation.



**DIMENSIONS AND WEIGHTS**

TYPE	A	B	C	D	E X F	G	H	J	K	L	M	N X P	Q	Weight (kg)
<b>PAI60</b>	118	129	240	116	100 x 60	104	60	1"	3/4"	112	174	112 x 125	112	10
<b>PAI80</b>	118	131	242	116	100 x 36	104	60	1.1/4"	1"	112	175	112 x 125	112	15

**SPECIFICATIONS**

TYPE			PAI60	PAI80
Displacement		Vg	cm <sup>3</sup> /n cm <sup>3</sup> /rev	60.2 78.2
Max continuous operating pressure		P 1	bar	250 250
Max intermittent operating pressure	(Max 30 sec)	P 2		350 350
Max peak pressure	(0.1 sec)	P 3		450 400
Max intermittent speed	(P 30 bar)	n3	n / m rpm	2200 2000
(max 30 sec)	(P2)	n2		1800 1500
Max continuous speed	(P1)	n1		1500 1300
Min intermittent speed (max 30 sec)	(P2)	n4		400 400
Suction Pressure (absolute)		P	bar	0.7 + 2.5
Operating viscosity range		v	cSt	9 + 75
Optimal viscosity range		v		15 + 35
Start up max viscosity		v		1000 1000
Fluid Tc°		t	c°	-25 + 80 c°