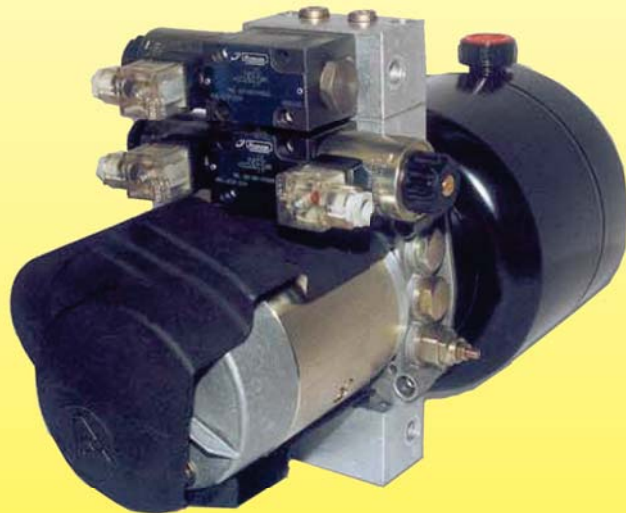


**NZH**

**TRANSPORT  
HYDRAULIC  
SOLUTIONS**



**HYDROVEN**

**ELECTRO-HYDRAULIC  
POWERPACK**

**Call NZH on 0800 22 55 69**

**[www.nzh.co.nz](http://www.nzh.co.nz)**

# ELECTRO-HYDRAULIC POWERPACK

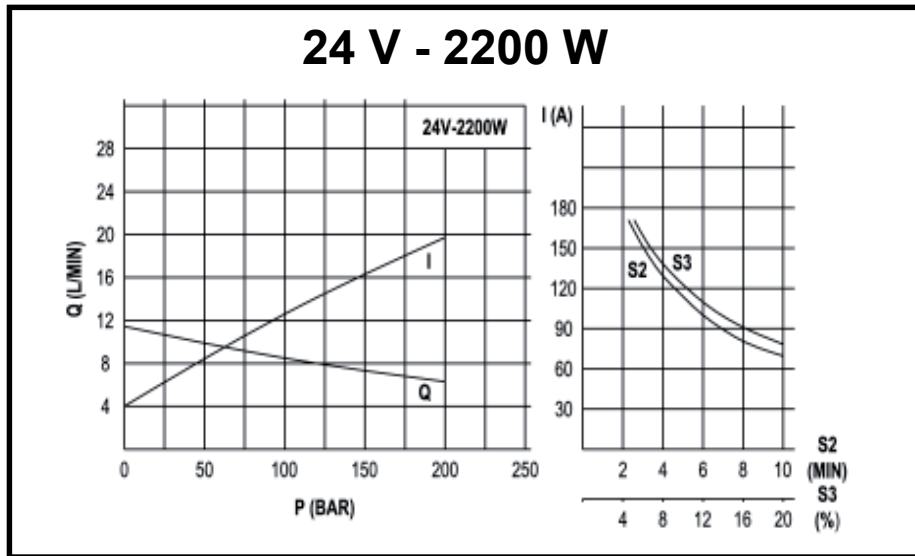
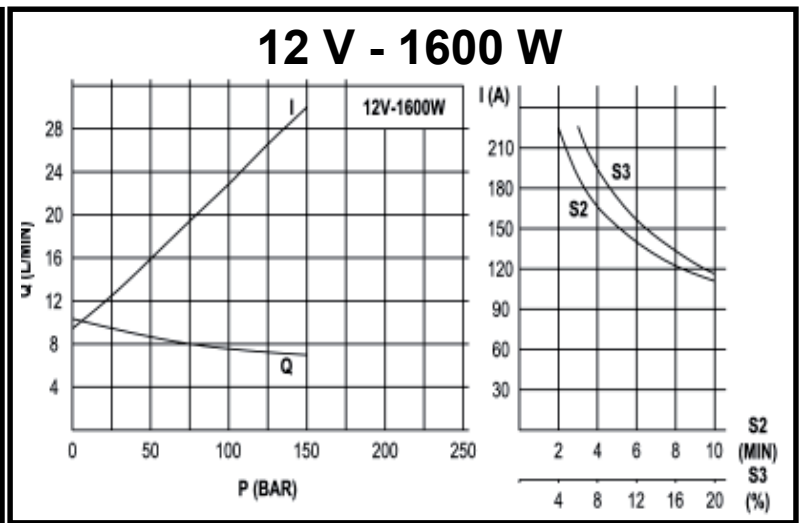
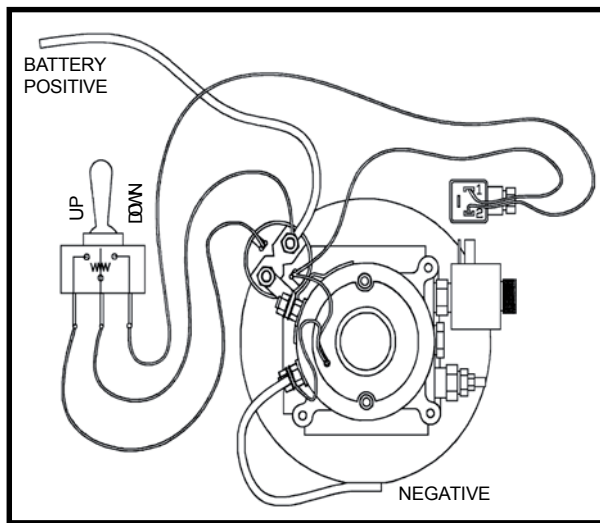
## Features:

- ✓ 12 Volt, 1600 Watt DC motor.
- ✓ 24 Volt, 2200 Watt DC motor.
- ✓ 12 or 24 Volt 80 Amp starting relay.
- ✓ Single acting.
- ✓ Adjustable relief valve.
- ✓ Protection cover.

## Options:

- ✓ Ce-Top 3 valve.
- ✓ Counter-balance valve.
- ✓ Manual descent cartridge valve.
- ✓ Hand pump override.
- ✓ Interchangeable tanks.
- ✓ Double acting.

GEAR PUMP SPECIFICATIONS				CURRENT DRAW		
Cm 3/rev	Max Continuous Pressure (Bar)	Velocity Min (rpm)	Velocity Max (rpm)	12v - 1600w 2.5cc	150 bar	250 Amps
2.5	230	800	3500	24v - 2200w 2.5cc	150 bar	130 Amps
				24v - 2200w 2.5cc	200 bar	160 Amps



TANK SIZE	A	B
5 LTR	200	204.5
10 LTR	220	340
15 LTR	220	490